

**SINGLES IN A RESEALABLE BAG**



# MAXFORCE<sup>®</sup>

## FC Ant Bait Stations

envu<sup>™</sup>

**FOR USE IN COMMERCIAL, INDUSTRIAL, AND RESIDENTIAL AREAS**

**ACTIVE INGREDIENT:** Fipronil\*: [5-amino-1-(2, 6-dichloro-4-trifluoromethyl) phenyl)-4-(1, R, S)-(trifluoromethyl) sulfinyl)-1H-pyrazole-3-carbonitrile].....0.01%

**OTHER INGREDIENTS:**.....99.99%

**TOTAL:** 100.00%

\*CAS NO. 120068-37-3

EPA Reg. No. 101563-46

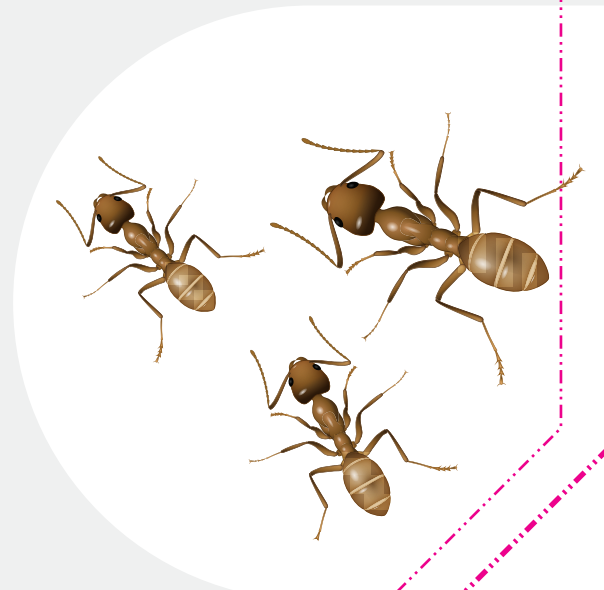
EPA Est. No. 071106-GA-003

**KEEP OUT OF REACH OF CHILDREN  
CAUTION**

### FIRST AID

<b>If on skin or clothing:</b>	<ul style="list-style-type: none"><li>• Take off contaminated clothing.</li><li>• Rinse skin immediately with plenty of water for 15-20 minutes.</li><li>• Call a poison control center or doctor for treatment advice.</li></ul>
<b>If in eyes:</b>	<ul style="list-style-type: none"><li>• Hold eye open and rinse slowly and gently with water for 15-20 minutes.</li><li>• Remove contact lenses, if present, after the first 5 minutes, then continue rinsing.</li><li>• Call a poison control center or doctor for treatment advice.</li></ul>

**Have the product container or label with you when calling a poison control center or doctor or going for treatment. You may also contact 1-800-424-9300 for emergency medical treatment information.**



**Argentine Ant**

**Contents:**

**24 Child-Resistant Bait Stations**

**Net Weight:**

**0.05 Oz (1.5 g) per unit**

**Total Net Weight:**

**1.27 Oz (36.0g)**

**80194501**

**80243383G 221216AV1**

TEAR HERE TO OPEN



# MAXFORCE<sup>®</sup>

## FC Ant Bait Stations

### PRECAUTIONARY STATEMENTS

#### HAZARDS TO HUMANS AND DOMESTIC ANIMALS

#### CAUTION

Wash thoroughly with soap and water after handling bait stations.

#### PRODUCT INFORMATION

MAXFORCE<sup>®</sup> FC Ant Bait Stations contain an attractive bait formulation which kills Pharaoh ants and other common household ants: Argentine Ants, Crazy Ants, Pavement Ants, Cornfield Ants, Odorous House Ants, Acrobat Ants and Thief Ants by contact and ingestion. When properly used, MAXFORCE FC Ant Bait Stations will attract foraging worker ants that feed on the bait, which contains the active ingredient Fipronil. Then, the worker ants will take some of this bait back to the nest, where they will pass it on to kill the queen and the entire colony\*\*. This is called the Maxforce Domino Effect<sup>®</sup>. Not for use against Fire ants, Carpenter ants, or Harvester ants.

MAXFORCE FC Ant Bait Stations have no insecticide odor, are child-resistant and easy to use. The bait station design allows you to inspect each bait placement and monitor the amount of ant feeding. They may be used for the control of above listed ants in hospitals, nursing homes, day care centers, schools, residential establishments, warehousing and commercial establishments, food service, food manufacturing and food processing facilities, laboratories, computer and electronic equipment facilities, pet shops, zoos, buses, boats, aircraft, and trains.

\*\*except pharaoh ant

### DIRECTIONS FOR USE

**It is a violation of Federal law to use this product in a manner inconsistent with its labeling.**

1. Simply place each bait station indoors or outdoors (adjacent to the home or structure) immediately next to ant trails or close to areas where ants are numerous. Nests are usually located in dark, humid and warm areas close to a water and food source. Bait stations should be placed in or near wall voids, electrical outlets (if wiring permits), potted plants, waste-paper baskets, garbage cans, and sinks. Bait stations can be placed in cabinets, next to dishes, near sensitive equipment or in any place specifically listed on this label. In zoos and pet shops, place bait stations out of reach of zoo animals and pets.
2. **Indoor Use:** For normal infestations, you should use 3 MAXFORCE FC Ant Bait Stations in an average size room. For heavier infestations, you will need additional bait stations in each room. If infestation persists beyond two weeks, replace all bait stations where the bait has been completely consumed and relocate bait stations that show no evidence of ant feeding.
3. **Outdoor Use:** Bait stations should be placed adjacent to the home or structure near ant activity or anywhere ants may gain access to the home or structure. Application sites include electrical conduits, vents, pipe chases, concrete slabs, skylights on roofs; around ant mounds, garbage cans, and trees; along walls, window sills, sidewalks, and driveways; on ground around home or structure.
4. The bait stations can be stuck to vertical surfaces by removing the easy peel and stick adhesive covering from the bottom of the station.
5. Do not spray the bait stations. Avoid placing the bait stations on freshly sprayed surfaces.
6. Increased ant activity may be seen near the bait stations immediately after placement for short periods but you can expect to see less activity within three days. After placement, ant trails may be observed between the bait stations and the nests. For best results do not interfere with the ants or the stations because ants must carry the bait back to the nest to destroy the queen and colony\*\*.
7. Inspect all bait stations and replace as needed for continuous control of above listed ants.

\*\*except pharaoh ant

### STORAGE AND DISPOSAL

Do not contaminate water, food, or feed by storage and disposal.

**STORAGE:** Store in a cool dry area out of reach of children.

**PESTICIDE DISPOSAL:** Wrap bait stations in several layers of newspaper and discard in trash.

### CONDITIONS OF SALE AND LIMITATIONS OF WARRANTY AND LIABILITY

Read the entire Directions for Use, Conditions, Disclaimer of Warranties and Limitations of Liability before using this product. If terms are not acceptable, return the unopened product container at once.

By using this product, user or buyer accepts the following Conditions, Disclaimer of Warranties and Limitations of Liability.

**CONDITIONS:** The directions for use of this product are believed to be adequate and must be followed carefully. However, it is impossible to eliminate all risks associated with the use of this product. Ineffectiveness, plant injury, other property damage, as well as other unintended consequences may result because of factors beyond the control of Environmental Science U.S., LLC. Those factors include, but are not limited to, weather conditions, presence of other materials or the manner of use or application. All such risks shall be assumed by the user or buyer.

**DISCLAIMER OF WARRANTIES:** TO THE EXTENT CONSISTENT WITH APPLICABLE LAW, ENVIRONMENTAL SCIENCE U.S., LLC MAKES NO OTHER WARRANTIES, EXPRESS OR IMPLIED, OF MERCHANTABILITY OR OF FITNESS FOR A PARTICULAR PURPOSE OR OTHERWISE, THAT EXTEND BEYOND THE STATEMENTS MADE ON THIS LABEL. No agent of Environmental Science U.S., LLC is authorized to make any warranties beyond those contained herein or to modify the warranties contained herein. TO THE EXTENT CONSISTENT WITH APPLICABLE LAW, ENVIRONMENTAL SCIENCE U.S., LLC DISCLAIMS ANY LIABILITY WHATSOEVER FOR SPECIAL, INCIDENTAL OR CONSEQUENTIAL DAMAGES RESULTING FROM THE USE OR HANDLING OF THIS PRODUCT.

**LIMITATIONS OF LIABILITY:** TO THE EXTENT CONSISTENT WITH APPLICABLE LAW, THE EXCLUSIVE REMEDY OF THE USER OR BUYER FOR ANY AND ALL LOSSES, INJURIES OR DAMAGES RESULTING FROM THE USE OR HANDLING OF THIS PRODUCT, WHETHER IN CONTRACT, WARRANTY, TORT, NEGLIGENCE, STRICT LIABILITY OR OTHERWISE, SHALL NOT EXCEED THE PURCHASE PRICE PAID, OR AT Environmental Science U.S., LLC'S ELECTION, THE REPLACEMENT OF PRODUCT.

Envu and the Envu logo are trademarks and Domino Effect<sup>®</sup> and Maxforce<sup>®</sup> are registered trademarks owned by Environmental Science U.S., LLC or one of its affiliates.



PRODUCED FOR  
Environmental Science U.S., LLC  
5000 CentreGreen Way, Suite 400  
Cary, NC 27513  
Product of China

